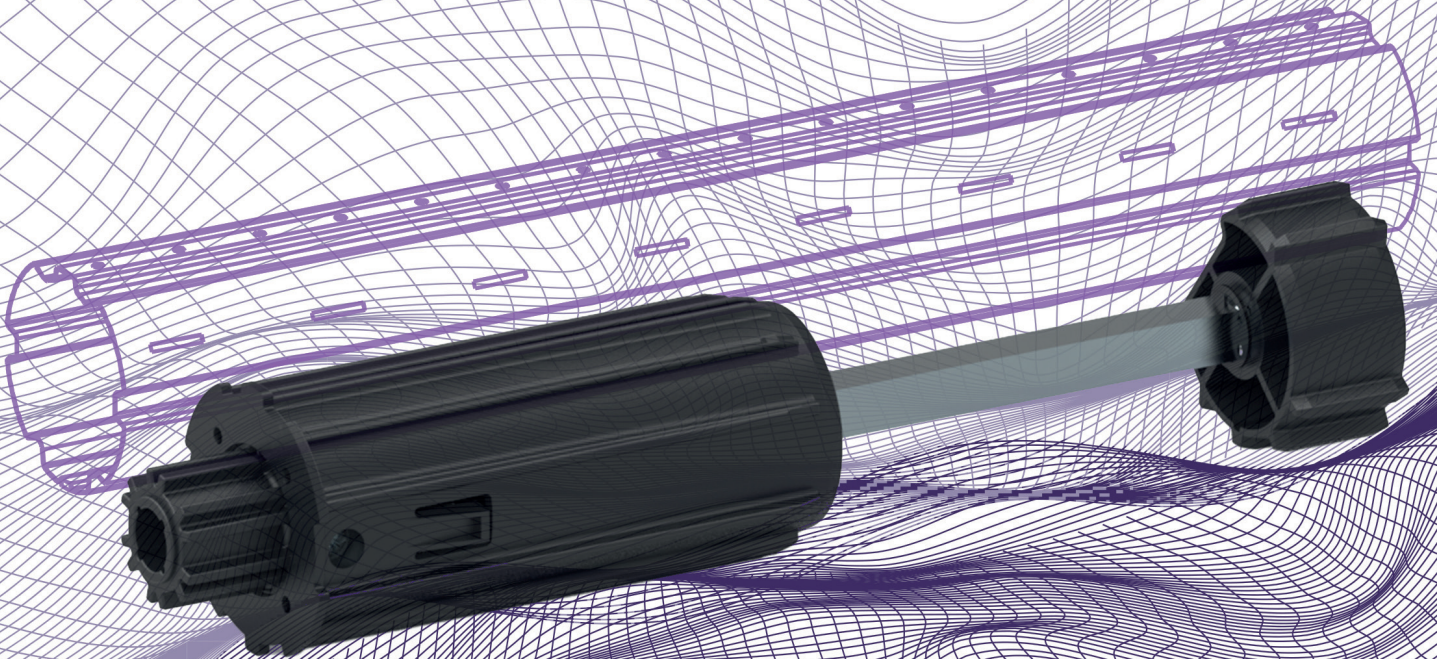




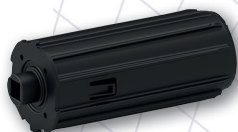
ZURFLÜH-FELLER

Caps & Dummy Ends for ZF Tubes



Retractable caps

ZF54



Item no. A490A

Mounted on ball bearings, bore dia. 18. Gear transmission by means of 10 mm square.

Weight capacity per retracted cap: 10 kg.

ZF64



Item no. A322A

Short caps

ZF54

Lgth 65 mm



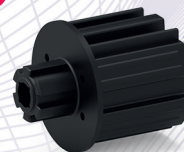
Item no. A495B

Mounted on pin dia. 12 mm. Gear transmission by means of either jaw coupling hub or 10 mm square.

Weight capacity per cap: 8 kg.

ZF64

Lgth 50 mm



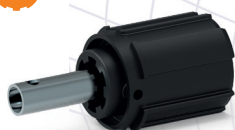
Item no. A300D

Gear transmission by means of either jaw coupling hub or 10 mm square.

Weight capacity per cap: 8 kg.

Caps with shaft

ZF54

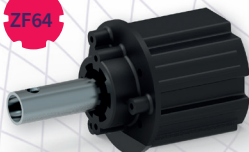


Item no. A850

Mounted with pin bracket. Gear transmission by means of jaw coupling hub.

Weight capacity per cap: 8 kg.

ZF64



Item no. A296

Multipurpose dummy ends

ZF54



Item no. A850B

Mounted with pin bracket. Gear transmission by means of jaw coupling hub.

Weight capacity per dummy end: 20 kg.

ZF64



Item no. A292

Mounted with pin bracket. Gear transmission by means of jaw coupling hub.

Weight capacity per dummy end: 20 kg.

ZF80

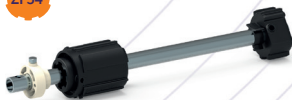


Item no. A342

Mounted with pin bracket. Gear transmission by means of jaw coupling hub. Weight capacity per dummy end: 25 kg.

Adjustable dummy ends

ZF54



Item no. A850A

Mounted with pin bracket. Used on side opposite gear, max. offset 130 mm.

Weight capacity per dummy end: 20 kg.

ZF64



Réf. A293

Mounted with pin bracket. Used on side opposite gear, max. offset 90 mm.

Weight capacity per dummy end: 17 kg. Version available with max. offset 130 and weight capacity per dummy end: 20 kg.

ZF80



Item no. A350A

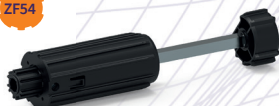
Used when operating with gearbox and 10 mm square safety brake system 18 mm square adapter.

Max. offset 85 mm.

Weight capacity per dummy end: 20 kg.

Retractable dummy ends

ZF54

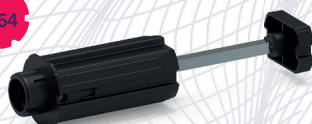


Item no. A491

Mounted on pin dia. 12 mm. Gear transmission by means of jaw coupling hub.

Weight capacity per retracted dummy end: 20 kg.

ZF64



Item no. A264A

Used with jaw coupling hubs, dia. 28, clip-on backing plates and pulleys.

Weight capacity per retracted dummy end: 20 kg.



11 Rue des Herbiers
25190 Noirefontaine – France
Tel.: +33 (0)3 81 99 33 00
Fax: +33 (0)3 81 99 33 40

std@zurfluh-feller.com
www.zurfluh-feller.fr